



UEI: GAU4Z7JYTCV5

DUNS: 122850420

CAGE: 8N7C2

Woman-Owned Small Business (WOSB)

Primary NAICS:

332710 – Machine Shops

Secondary NAICS:

332216, 332721, 333249, 333514, 333515, 333517, 333519, 333612, 333991, 333999

Past Performance

Federal - State - Commercial

BAUSCH+LOMB



BOEING



DELTA
Google



MSC | BUILT TO MAKE YOU BETTER™

McMASTER-CARR



RIO GRANDE
Since 1944



Capabilities Statement

Bauer Precision Machining is a Women-Owned Small Business (WOSB) precision machining company with 24 years of in-house experience. We utilize a variety of manual and advanced CNC milling and turning centers, allowing us to optimize every project by selecting the most cost-effective approach while maintaining the highest quality standards. Our team of expert machinists are proficient at working with a range of materials, and by utilizing software integration, we offer rapid CNC prototypes, small-batch machining, and high-volume production runs, all while maintaining precise tolerances and end-to-end oversight. At Bauer Precision Machining, we are dedicated to providing our customers a seamless production experience by reliably delivering high-quality products, that support each client's unique mission from concept to delivery.

Core Competencies

- CAD/CAM design and integration utilizing SolidWorks, FeatureCAM, and CAMWorks
- CNC Vertical Machining centers with 4th axis, high-speed machining, and rigid tapping
- CNC Turning with multi-axis, sub-spindle, live tooling, and programmable tailstock
- CNC Lathes equipped with feeders for automated part production
- Manual drilling, milling, and turning
- Hydraulic and manual grinding
- Short run R&D Prototype or Large Production Quantities
- Tooling, Jig, and Fixture manufacturing
- Sub-Assembly & Kitting
- Post-processing capabilities and surface finishing

Differentiators

- 24 years of in-house manufacturing
- Our 10,000 sq ft climate-controlled facility houses 8 CNC milling and turning centers and dozens of manual machining stations.
- Our highly skilled team utilizes over 100 years of experience to meet your needs.
- Located in central Pennsylvania, we are within 75 miles of several military bases, less than 20 miles to NSA Mechanicsburg and DLA Susquehanna, and within a 4-hour drive to major ports ranging from Washington DC, Philadelphia, to New York City.
- Direct delivery of finished parts by in-house delivery vehicles or direct shipping using multiple carries with services ranging from standard Ground, LTL, or EXW to DDU.
- Postprocessing solutions such as bead blasting, powder coating, heat-treatment, plating, black oxidization, wire EDM, and more either in-house or coordinated directly with small, local, qualified vendors.
- Served customers in all 50 states, plus Washington DC, Puerto Rico, and Guam and 64 countries on 6 continents
- CE, Conflict Minerals, EAC, NDAA Section 889, Prop 65, REACH, RoHS-3, and USMCA/CUSMA/T-MEC compliant with Certifications and Statements available.
- Other Past Customers: BAE Systems, General Motors, Ingersoll-Rand, NASA, P&G – The Gillette Company, Pentagon, Raytheon Technologies, and SpaceX, and many Universities across the world; Army, Marine Corps, Navy, Air Force, and Coast Guard





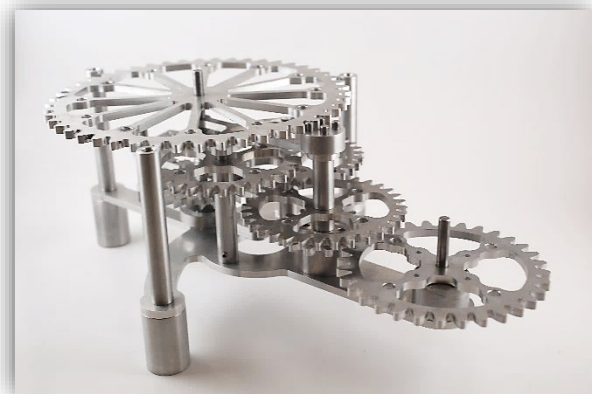
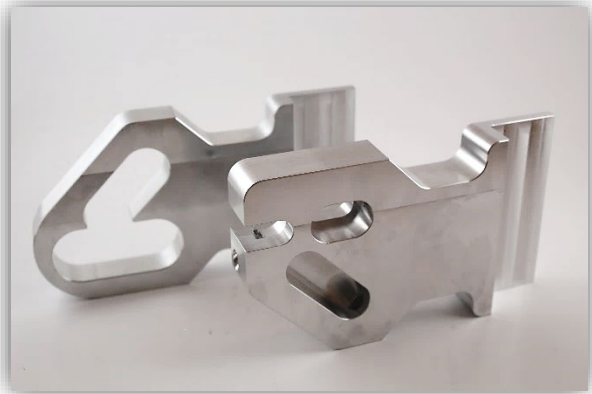
BAUER
Precision Machining

160 Stover Drive, Carlisle., PA 17015

(717) 385-4875

www.BauerPrecisionMachining.com

Lauren.Bauer @BPMach.com



SBA WOSB
Woman Owned Small Business

